

## HOW TO SET UP A SUCCESSFUL RECYCLING PROGRAM

For recycling programs to flourish in an office, business, school, hotel, condo, or a public space you need to start it off right.

### IDENTIFY A LEADER

### PLAN YOUR APPROACH

### BUY YOUR BINS & BAGS

### PROMOTE YOUR PROGRAM

### REFUND YOUR CONTAINERS

### CHOOSE A PICK-UP SERVICE

FIND OUT MORE AT  
[www.albertadepot.ca](http://www.albertadepot.ca)

## YOUR LOCAL DEPOT

There are over 200 Depots in Alberta sorting, counting and providing refunds to consumers. Your Depot can also provide you with support and resources to recycle your beverage containers.

### COMMERCIAL PICKUPS

If you operate a business that produces a large volume of beverage containers, check with your local Depot to see if they or a charitable partner offer a pickup service.

### EVENT SUPPORT

If you are hosting an event in your community, your local Depot may be able to provide you with recycling bins and additional support.

### DONATION PROGRAMS

Many Depots work with a wide array of charities and organizations to help raise money for their cause. If you are interested in donating your containers or setting up a donation program, please contact your local Depot.

### FUNDRAISING

Your local Depot has bottle drive tips and tools that can help your fundraising efforts. Some Depots also have trailers or bins available to assist with the collection of the containers.

### APPLAUD A DEPOT

Share your stories and recognize your local Depot for the amazing work they do. Each Applaud enters you into a draw for great prizes.

FIND YOUR LOCAL DEPOT AT  
[www.albertadepot.ca](http://www.albertadepot.ca)

## CONTAINER RECYCLING FEE

Alberta has one of the most innovative and effective beverage container recycling programs in North America. Some of the money to operate the system comes from the sale of the recycled material from the containers, some from the unredeemed deposits and some from the Container Recycling Fee, which covers the collection and processing of the used beverage containers.

### Q: WHY DO CONTAINERS HAVE DIFFERENT CONTAINER RECYCLING FEES?

A: Container recycling fees vary with the material and size of the container. Since different containers cost different amounts to recycle, the fee is also different.

### Q: WHO BENEFITS FROM THE CONTAINER RECYCLING FEE?

A: We all do. The beverage container recycling fee reflects the net costs of recycling after other funds like unredeemed deposits and money from the sale of recyclable materials are used.



## DID YOU KNOW?

RECYCLING ONE  
ALUMINUM CAN SAVES  
ENOUGH ENERGY TO RUN  
YOUR TV FOR 3 HOURS

IT TAKES 1 MILLION  
YEARS FOR GLASS  
TO BREAKDOWN IN  
A LANDFILL

IT TAKES 1,000 MILK JUGS  
TO MAKE A NEW RECYCLED  
PARK BENCH

THE ENERGY SAVED FROM  
RECYCLING 1 GLASS  
BOTTLE CAN RUN A  
100-WATT LIGHT BULB  
FOR 4 HOURS

THE SAME AMOUNT OF  
ENERGY IS USED  
TO PRODUCE 20 RECYCLED  
CANS AS ONE NEW CAN

## QUICK FACTS

EACH YEAR:

OVER 2 BILLION  
CONTAINERS ARE  
RETURNED

100+ COMMUNITIES  
RECEIVE RECYCLING  
INFRASTRUCTURE

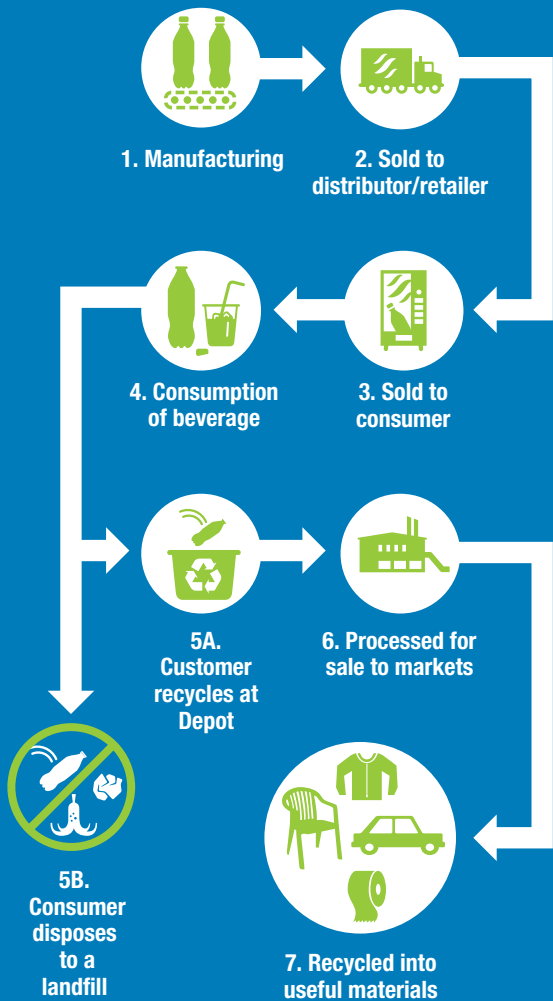
100+ MILLION KG  
ARE REDIRECTED  
FROM LANDFILL

MILLIONS ARE RAISED  
FOR CHARITIES

**DEPOT**  
It's Worth It

[www.albertadepot.ca](http://www.albertadepot.ca)

## THE LIFE OF A BEVERAGE CONTAINER



## REFUND RATES 1 LITRE OR LESS



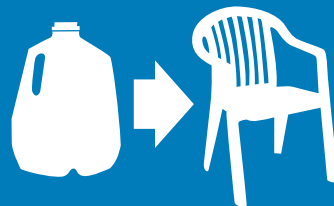
## OVER 1 LITRE



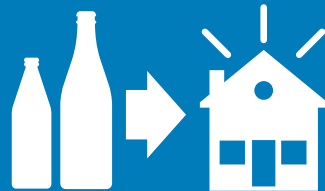
## HOW ARE THEY REUSED?



Aluminum cans become new aluminum cans



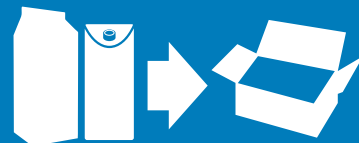
Plastic containers can become new plastic containers or plastic products



Glass containers can be used in fiberglass insulation



Metal containers can be used as scrap metal that become car parts



Polycoat, Juice and Milk Cartons can be converted to paper pulp and cardboard

## BEVERAGE CONTAINER RECYCLING PROGRAMS

### COMMUNITY CHAMPIONS PROGRAM

The Community Champions Program (CCP) is a grant program that helps build participation in beverage container recycling. CCP provides free program coaching and funding up to \$20,000 for the purchase of recycling bins. Organizations of all experience levels can get the support they need to start or expand their own recycling program.

**FUN FACT:** On average, 10 million beverage containers are captured annually through the Community Champions Program.

### SCHOOL PROGRAM

The school program is designed to encourage participation in beverage container recycling in young people. Schools registered in the program can request free bins, schedule classroom presentations, and participate along with other schools by reporting their monthly container counts.

## MAKING IT COUNT

ALBERTANS ARE SOME OF THE MOST ENGAGED AND EFFICIENT RECYCLERS IN CANADA. HERE'S HOW YOU CAN GET INVOLVED.

**DEPOT**  
It's Worth It